

Basstones Sheet

スタイルナンバー	0301V	
溶接棒スタイル番号	353VS	
建設	グラスファイバー入りの商業用異種シート	
クラス	Type I, Grade 1, Class B	
バックングクラス	4層溶融バックングシステム	
仕上げ	ExoGuard®	
	米国	メートル法
摩耗層の厚さ	20 mil (0.02 in)	0.51 mm
製品全体の厚さ	0.087 in	2.2 mm
インストール	Direct Glue	
推奨接着剤	S150-95 Resilient Tile Spray, 4200 Resilient Sheet 1 Gallon, 4200 Resilient Sheet 4 Gallon or 4151 Multi-Use Premium 4 Gallon	

包装

実際のロールサイズ	6.00 ft w x 75.00 ft l	1.83 m w x 22.86 m l
ロールあたりの面積	50 sy/roll	41.81 sq m/roll
ロールごとの重量	267.5 lbs	121.34 kg



推奨インストール方法



Reverse

パフォーマンス + テスト

残留圧痕 (astm F1914)	Passes
柔軟性 (astm F137)	Passes
耐熱性 (astm F1514)	Passes
耐光性 (astm F1515)	Passes
耐薬品性 (astm F925)	Passes
摩擦係数(astm D2407、滑り抵抗)	≥0.5, meets the recommended static coefficient of friction for ADA walking surfaces

Test Reports may be included or listed by the manufacturing/inventory style number as opposed to the noted selling style number.

保証

15年の商用限定保証

[Commercial 15 Year Underbed Bond Warranty](#)

Diversity, Equity & Inclusion

We believe all humans are equal. Individually and collectively, we need to proactively create and promote opportunities that give everybody an equal footing in life. We nurture an environment where every voice and perspective can be heard, and proactively promote accessibility and inclusivity inside our network and beyond. One proof point is our ability to meet the criteria of the Social Fairness pillar of the Cradle to Cradle Product Standard. At Shaw Industries, we promote supplier participation that is reflective of Shaw's diverse customer base and local community. More than 42% of our spend***** is with small and diverse businesses. We believe having a strong Supplier Diversity Program is strategic for bringing more innovation to our businesses and openingnew markets for growth.





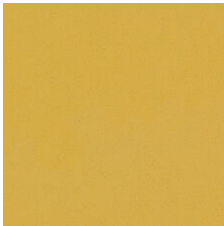

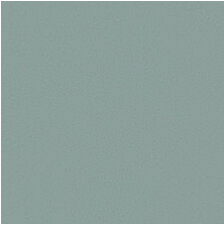
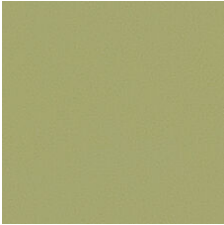
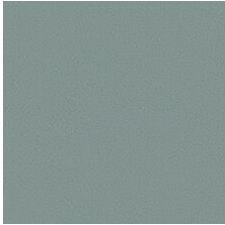

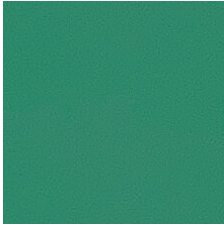
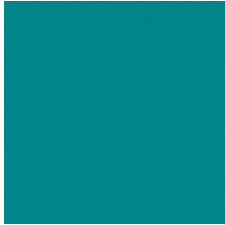
属性+認定

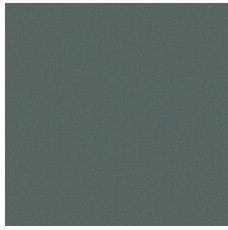
Climate Impact	
Environmental Product Declaration (EPD)	ISO 14025、EN 15804 および ISO 21930:2017 に基づく第三者認証取得
Total Recycled Content	0% (Pre-Consumer 0% Post-Consumer 0%)
Global Product Assessment	FloorScore® 認証取得 CE Marking (EN 14041) 第三者認証取得 Country of Origin Imported

グリーンリード貢献クレジット

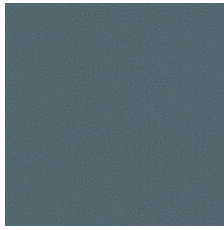
MRクレジット：製品の開示と最適化の構築 環境製品宣言-オプション1：環境製品宣言 (EPD) EQクレジット：低排出材料 オプション1：製品カテゴリの計算 Installation Guidelines Maintenance Guidelines	3rd Party Certified in Accordance with ISO 14025, EN 15804, & ISO 21930:2017 FloorScore Certified Please visit www.shawcontract.com for the most current warranty information. Specifications are subject to nominal manufacturing variance. Material supply and/or manufacturing processes may necessitate changes without notice. This product is an exclusive design and may not be duplicated in any manner. Use of this design in the creation of another product design is also strictly prohibited. Visit shawcontract.com/testing for more information.
--	--

Available Colorways

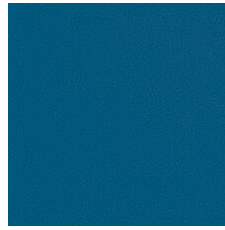
					
Flaxen Vibe 00100 Weldrod 02001	Ecru Cadence 00110 Weldrod 02001	Desert Sound 00120 Weldrod 02027	Polished Brass 00140 Weldrod 09633	Set Off 00200 Weldrod 02002	Camel Accent 00210 Weldrod 02025
					
Coastal Tempo 00300 Weldrod 02003	Underscore 00310 Weldrod 02004	Stanza Sage 00320 Weldrod 02005	Tonal Vine 00330 Weldrod 02003	Elevate 00340 Weldrod 02006	Amplitude 00350 Weldrod 02007



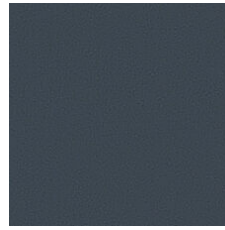
Aqua Tone 00360
Weldrod 02008



Graytone Fade 00410
Weldrod 02009



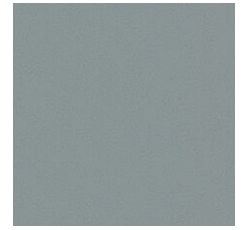
High Fidelity 00420
Weldrod 02010



Mineral Score 00430
Weldrod 02011



Pearly Melody 00500
Weldrod 01203



Pewter Serenade 00530
Weldrod 05244



Ashen Interval 00540
Weldrod 02014



Boost 00600
Weldrod 02017



Adobe Verse 00610
Weldrod 02018



Chorale Clay 00630
Weldrod 01823



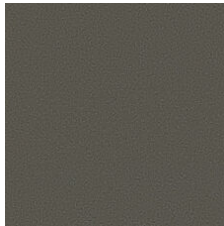
Khaki Cue 00700
Weldrod 02001



Neutral Intro 00710
Weldrod 02020



Gilded Mink 00750
Weldrod 02026



Coffee Echo 00760
Weldrod 05230



Amplify 00800
Weldrod 02022



Emphasize 00900
Weldrod 02024

